

TOTAL RISKS PROTECTION



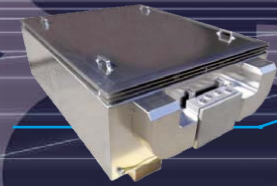
Ex d control panel



Explosion protected equipment for offshore platforms



Explosion protected fork lift truck



Ex e stationary batteries



Explosion protected internal combustion engines

Ex d ENCLOSURES



Hazardous areas with potentially explosive atmospheres, extreme and tough environments are the routine work for EXCEN, with its vast experience in EX conversions and certified products. EXCEN can convert a variety of equipment and manufacture tailor made products in accordance with ATEX & IECEx standards for on-shore industry, off-shore platforms, coal mines or underground working, with the presence of flammable gas, vapours or dusts.



EXCEN S.r.l. Unipersonale
Via Marcora 61/69
20097 San Donato Milanese (MI) - Italia

www.excen.it

tel: +39 02 51800429
fax: +39 02 51800237
sales@excen.it



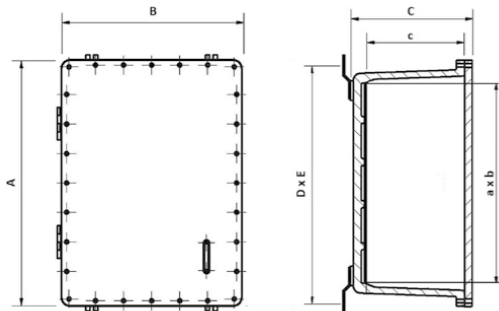
Le custodie della serie APC sono progettate per essere installate in ambienti con pericolo di esplosione quali impianti petrolchimici, chimici ed offshore, e in tutte le condizioni dove necessiti avere la massima protezione sulla funzionalità di apparecchiature elettriche ed elettroniche in presenza di gas infiammabili o polveri combustibili. Possono essere realizzate in acciaio al carbonio, acciaio inox o in lega di alluminio con diverse finiture e verniciature.



Copper Free Aluminium Alloy

Modello Model	Dimensioni esterne External dimensions			Dimensioni interne Internal dimensions			Dimensioni di fissaggio Fixing dimensions			Piastra di fondo Mounting Plate		Peso Weight kg
	A	B	C	a	b	c	D	E	F	G	H	
APC224/A	315	250	175	230	160	130	180	241	M8	215	150	10
APC425/A	425	247	230	330	153	188	290	249	M8	320	150	15
APC446/A	489	412	260	375	300	208	335	414	M8	360	290	35
APC456/A	530	492	258	418	385	203	360	480	M8	395	360	43
APC566/A	594	540	312	464	414	233	400	559	M10	445	395	78
APC656/A	832	445	315	720	340	235	630	449	M10	670	295	90
APC666/A	832	610	315	720	500	235	630	604	M10	670	450	120
APC667/A	832	610	410	720	500	330	630	604	M10	670	450	135

The APC series enclosures are designed to be installed in environments with risk of explosion such as petrochemical and chemical plants, off shore oil rigs and in any conditions that requires maximum protection of electrical and electronic equipment functionality in presence of flammable gas or combustible dust. Enclosures are available in mild steel, stainless steel or aluminum alloy with different finishing and painting.



Possono esistere piccole differenze dimensionali dovute alle tolleranze
Minor changes in these dimensions can be found due to small tolerance

Ambient Temperature TA

-20°C fino a/up to **+60°C**

-50°C fino a/up to **+60°C**



Ex db IIB or IIB + H₂ T₃ ÷ T₆ Gb
Ex tb IIIC T...°C Db IP66 Ta...°C
Ex db [ia Ga] IIB o IIB + H₂ Gb T₃ ÷ T₆ IP66
Ex db [ia Gb] IIB o IIB + H₂ Gb T₃ ÷ T₆ IP66

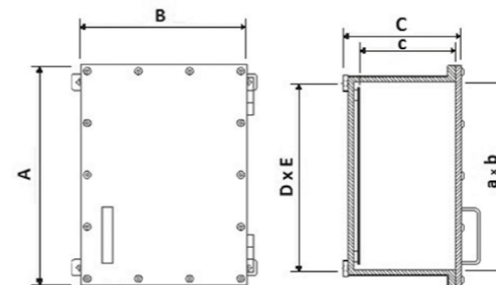


II 2G Ex d IIB or IIB + H₂ Gb T₃ ÷ T₆ IP66
II 2D Ex tb IIIC T...°C Db IP66 Ta...°C
II 2G Ex d [ia Ga] IIB o IIB + H₂ Gb T₃ ÷ T₆ IP66
II 2G Ex d [ib Gb] IIB o IIB + H₂ Gb T₃ ÷ T₆ IP66



316L Stainless Steel or Mild Steel

*Modello * Model	Dimensioni esterne External dimensions			Dimensioni interne Internal dimensions			Dimensioni di fissaggio Fixing dimensions			Piastra di fondo Mounting Plate		Peso Weight kg
	A	B	C	a	b	c	D	E	F	G	H	
APC114	180	150	168	130	100	130	140	130	7	120	90	11
APC234	290	230	178	230	170	140	225	225	9	210	150	23
APC434-A	400	230	180	340	170	140	335	225	9	320	150	30
APC434-B	400	280	180	340	220	140	335	275	9	320	200	34
APC435	460	270	220	400	210	180	395	265	9	380	190	42
APC445-A	410	310	220	350	250	180	345	315	9	330	230	42
APC445	450	370	224	390	310	180	385	365	9	370	290	56
APC546	600	340	244	530	270	200	525	325	11	510	250	70
APC556-A	500	440	250	430	370	200	425	425	11	410	350	82
APC556-B	560	470	250	490	400	200	485	455	11	470	380	96
APC646	710	330	290	630	250	240	625	305	11	610	230	103
APC656	770	420	297	690	340	240	685	395	13	670	320	146
APC666	780	530	305	700	450	240	675	520	15	680	430	207
APC768	1120	670	450	1020	570	380	1000	650	15	1000	550	432



Possono esistere piccole differenze dimensionali dovute alle tolleranze
Minor changes in these dimensions can be found due to small tolerance

*Add the required suffix to the model, for the material identification:

X for 316L or **M** for mild steel

i.e. APC434-A/X

Ambient Temperature TA

-20°C fino a/up to **+60°C**