

ALLIED EQUIPMENT



DISCHARGE DAMPER



STORM LOUVER/
MIST ELIMINATOR



ELECTRICAL STARTERS



WATER-TIGHT COVERS



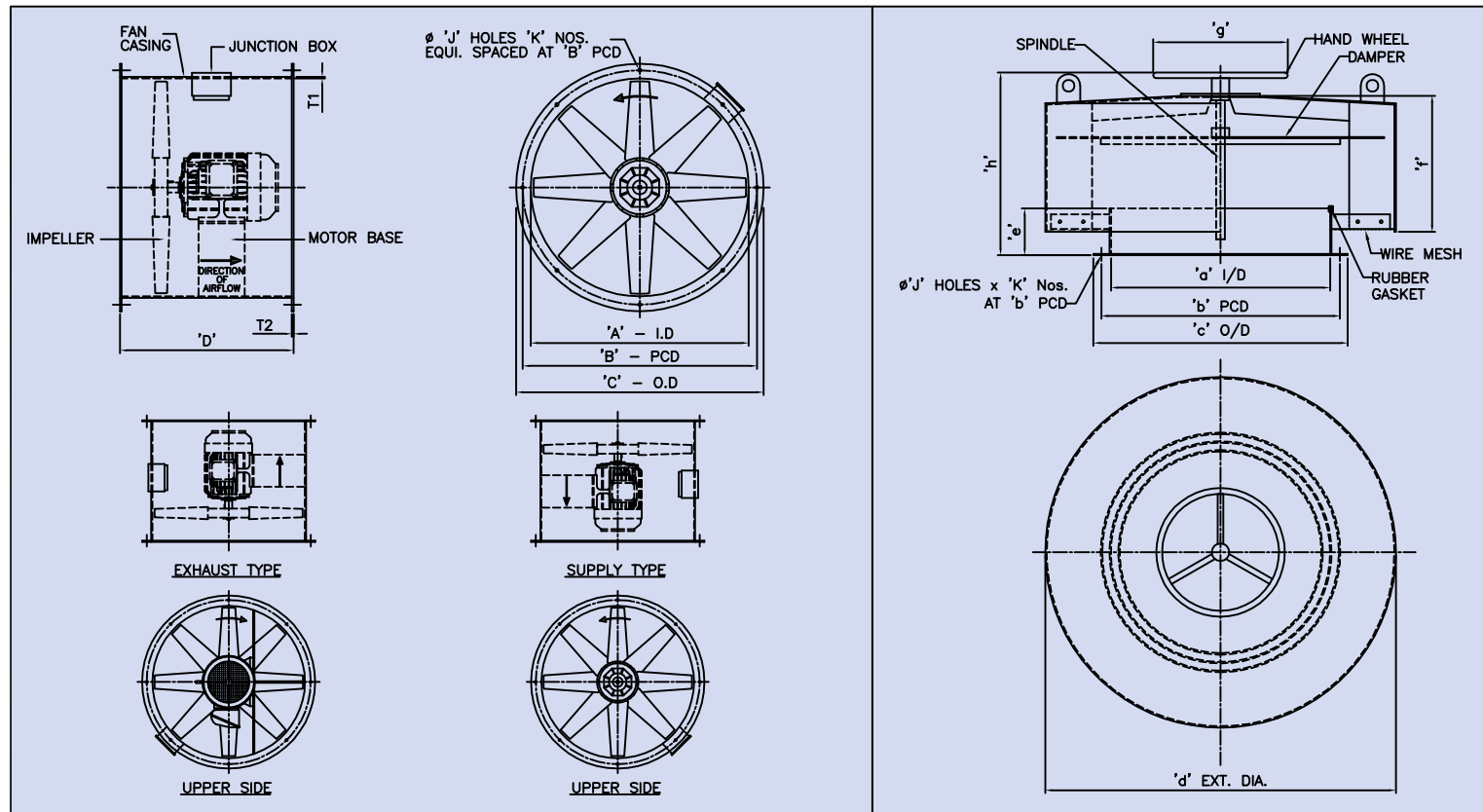
POD SILENCER



GUIDE VANE



SILENCER WITH
SHUT-OFF DAMPER



FAN MODEL	THICKNESS		FAN DIMENSIONS				FLANGE DETAILS		MUSHROOM COWLING DIMENSIONS							
	T1	T2	A	B	C	D(MAX)	J' DIA	K' NOS	a	b	c	d	e	f	g	h
200	3		205	248	286	305	12	6	205	248	286	405	115	200	150	325
	6	6		254	292					254	292					
250	3		254	298	336	305	12	6	254	298	336	460	115	250	150	375
	6	6		305	343					305	343					
300	3		305	350	388	356	12	8	305	350	388	560	115	285	150	410
	6	6		356	394					356	394					
350	3		355	400	438	415	12	8	355	400	438	660	115	320	200	445
	6	6		406	444					406	444					
400	3		405	450	488	500	12	8	405	450	488	750	140	370	200	520
	6	6		456	494					456	494					
450	3		455	500	538	600	14	8	455	500	538	842	140	405	200	555
	6	6		506	544					506	544					
500	3		505	550	588	750	14	8	505	550	588	935	150	450	200	600
	6	6		556	594					556	594					
550	3		555	600	638	800	14	8	555	600	638	1030	150	485	250	655
	6	6		606	644					606	644					
600	3		605	662	712	850	14	12	605	662	712	1120	150	520	250	690
	6	6		668	718					668	718					
650	3		655	712	762	850	14	12	655	712	762	1216	150	555	250	725
	6	6		718	768					718	768					
700	3		705	762	812	850	14	12	705	762	812	1310	150	590	400	760
	6	6		768	818					768	818					
750	3		755	812	862	850	14	12	755	812	862	1400	150	625	400	795
	6	6		818	868					818	868					
800	3		805	862	912	850	14	12	805	862	912	1497	150	635	400	805
	6	6		868	918					868	918					
900	4.5	4.5	905	977	1040	915	18	16	905	977	1040	1684	270	780	560	1030
	6	6		980	1043					980	1043					
1000	9/10	9/10	1005	987	1050	1065	18	16	1005	987	1050	1870	270	850	560	1100
	4.5	4.5		1077	1140					1077	1140					
1200	6	6	1205	1080	1143	1220	18	20	1205	1080	1143	2245	320	1040	560	1290
	9/10	9/10		1087	1150					1087	1150					
1250	4.5	4.5	1255	1290	1366	1220	18	20	1255	1290	1366	2340	320	1075	560	1325
	6	6		1293	1369					1293	1369					
1400	9/10	9/10	1405	1300	1376	1350	20	32	1405	1300	1376	2600	400	1230	762	1550
	6	6		1340	1416					1340	1416					
1500	6	6	1505	1343	1419	1400	20	32	1505	1343	1419	2806	400	1300	762	1620
	9/10	9/10		1350	1426					1350	1426					
1600	6	6	1605	1493	1569	1500	20	32	1605	1493	1569	3000	400	1370	762	1690
	9/10	9/10		1500	1576					1500	1576					
1800	6	6	1805	1593	1669	1950	20	40	1805	1593	1669	3368	400	1510	762	1830
	9/10	9/10		1600	1676					1600	1676					
2000	6	6	2005	1693	1769	2050	20	40	2005	1693	1769	ON APPLICATION				
	9/10	9/10		1700	1776					1700	1776					
	10	10		1901	1977					1901	1977					
	12	12		1905	1981					1905	1981					
	10	10		2101	2177					2101	2177					
	12	12		2105	2181					2105	2181					

NOTE:
 1) The dimensions quoted in this publications are generally correct, but should be check at the time of ordering. HISON reserves the right to change designs and specifications without notice.
 2) Certified dimensions and weights can be furnished after receipt of order.
 3) Inspection doors are standard for 800mm dia fan and above.
 4) All dimensions in mm.



AXIAL FLOW FANS



HISON PRODUCTS



HISON AXIAL FLOW FAN

(Formerly known as Howden Fan)

Available in both direct and belt driven arrangements. Casing can be constructed of mild steel, aluminium or stainless steel materials.

TYPICAL APPLICATIONS

- Air conditioning
- Building ventilation
- Marine industries
- Offshore projects
- Oven exhaust
- Spray booth exhaust
- Cooling
- Kitchen exhaust, etc...

HISON IMPELLER

HISON Impellers used on Axial Fans features the following advantages:-

- Adjustable pitch angles from 4° to 40°
- High efficiencies – up to 86%
- Non-overloading characteristic
- Low noise level
- Non-corrosive

Size available from 150mm to 2000mm in diameter.
Polypropylene Materials – Up to 760mm diameter.
Aluminum – From 200mm onward.



TEST METHOD

- The performance ratings of HISON fans have been established by test carried and in accordance with "BS 848 - Part 1 - 1980"
- Latest ISO 5801 First Edition 1997-06-1 and AMCA 210-99 Standard
- Sound data is tested in accordance to BS 848 - 1985 - Part 2 and ISO 5136 First Edition 1990-12-15

SPECIAL CONSTRUCTIONS

(Spark Resistant Construction – SRC)

HISON fans with Explosion Proof Motors and Spark Resistant Construction Features are built in compliance and certification by the following bodies

- Basefa Certified "ATEX" Certifications
- Type Approval by American Bureau Societies (ABS)
- AMCA Standard 99-0401-80 Type B SRC



VANE AXIAL FANS

HISON Axial Flow Fans with downstream guide vane increases pressure development generally by 25 to 30%. Fan efficiency will also normally improve on fans with guidevane unit.



MARINE FANS

Fans for marine industries and offshore projects are ruggedly constructed to withstand stringent and hostile environments.

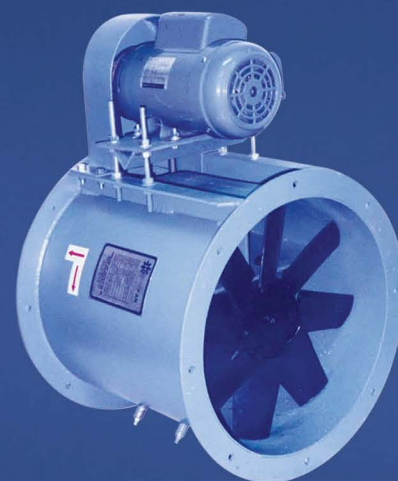
Explosion proof motors and spark Resistant Construction Fans are available on requirement.



BIFURCATED FANS

HISON Bifurcated Fans, splitway with motor out of air stream are designed to meet difficult operating conditions, like movement of

- Heated and hot air/gas
- Hazardous air
- Kitchen exhaust system
- Corrosive or contaminated properties
- Alternative to flameproof motor



BELT DRIVEN

Designed for application where motors need to be outside system airstream. HISON belt driven fans are ideal for moisture laden or dust laden or where system exhaust heated air.

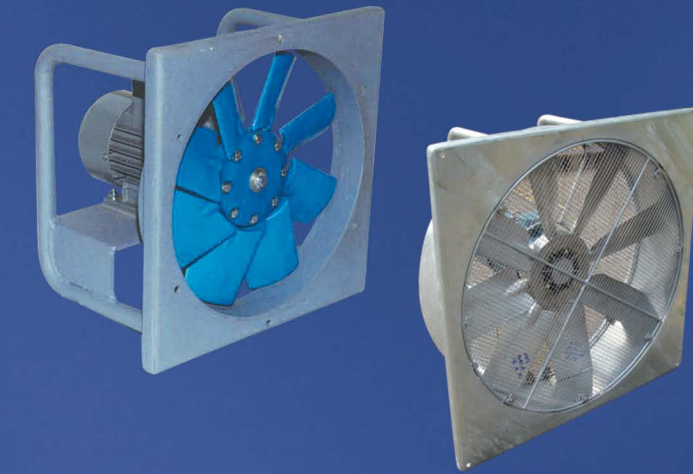


PLATE MOUNTED FANS

HISON plate mount fan, an efficient alternative to the ducted axial fan where installation is a constrain and pressure requirement is low. Available in 3 phase or 1 phase motors.



MANCOOLERS AND BUG BLOWERS

Specially designed for cooling hot spots, cooling, gas freeing and fume removal applications.

HISON Mancoolers aid in the dissipation of body heat through a higher evaporation rate, helping to prevent heat exhaustion and increase personal safety.

Particularly effective for fast turn around, minimising costly down time or where a clean healthy environment must be maintained for the safety of workers.

Various types of Bug Blowers are available to suit different or hazardous working conditions. Bug Blowers with Explosion Proof Motor & SRC for hazardous locations are 'ATEX' Certified.